



EasyRemote I/O User Guide

## *EasyRemote I/O*

This guide walks through the EasyRemote I/O usage on Weintek iR-ETN.

V1.00

---

## Table of Contents

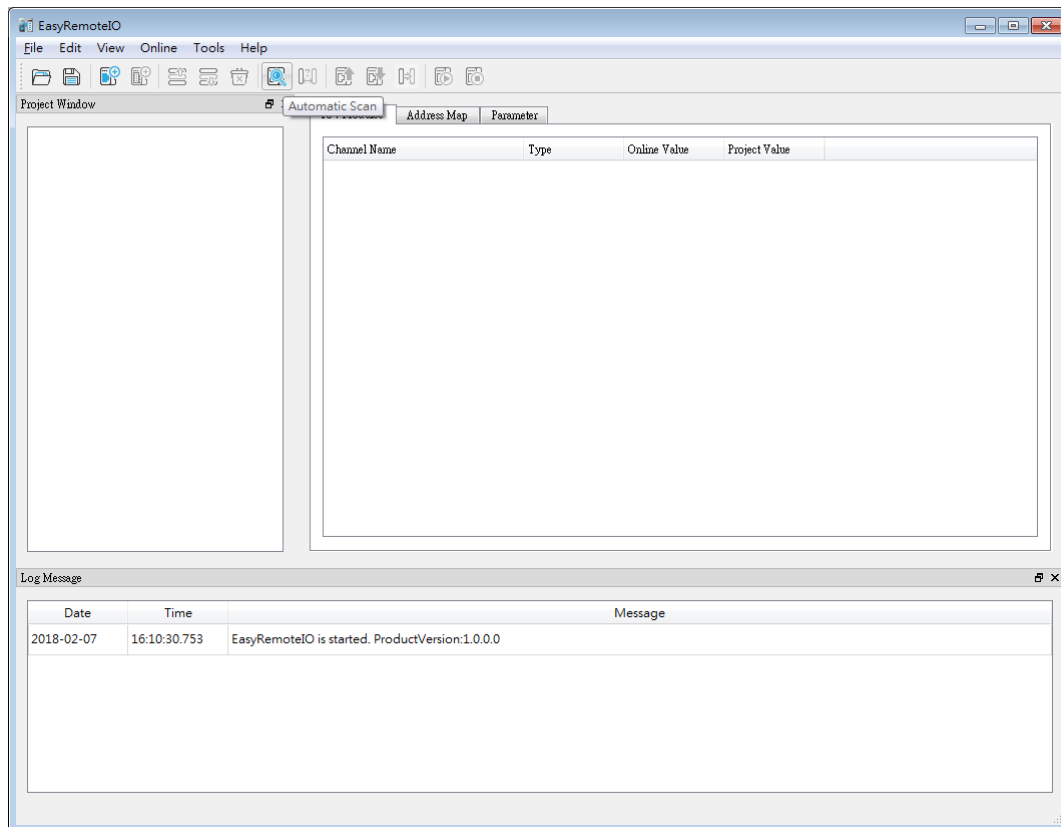
1. Overview.....	1
2. Quick Start.....	1
3. Setting.....	6
Edit.....	6
Online.....	6
Tools.....	8

## 1. Overview

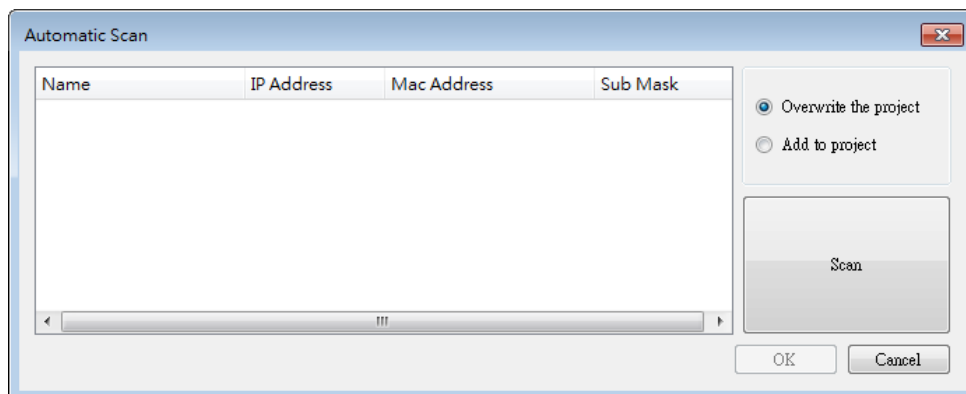
EasyRemote I/O is a tool for users to set up Weintek iR-ETN, which includes IP address, parameter settings, monitoring and modifying the values.

## 2. Quick Start

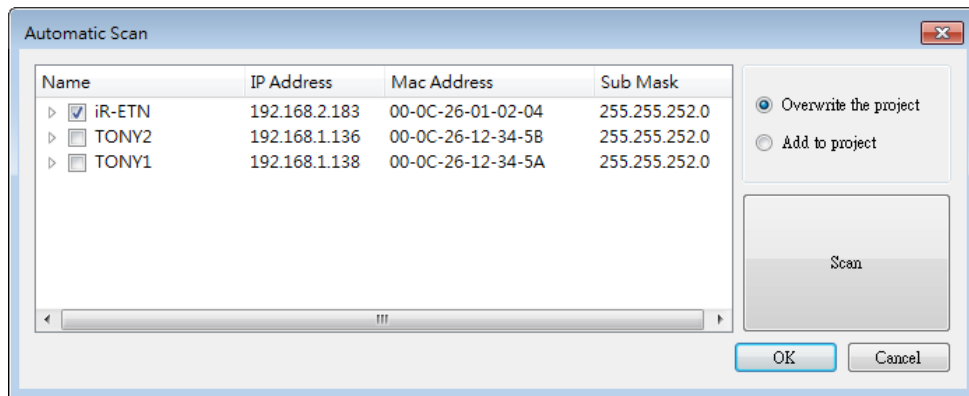
Open EasyRemote I/O, click on [Automatic Scan].



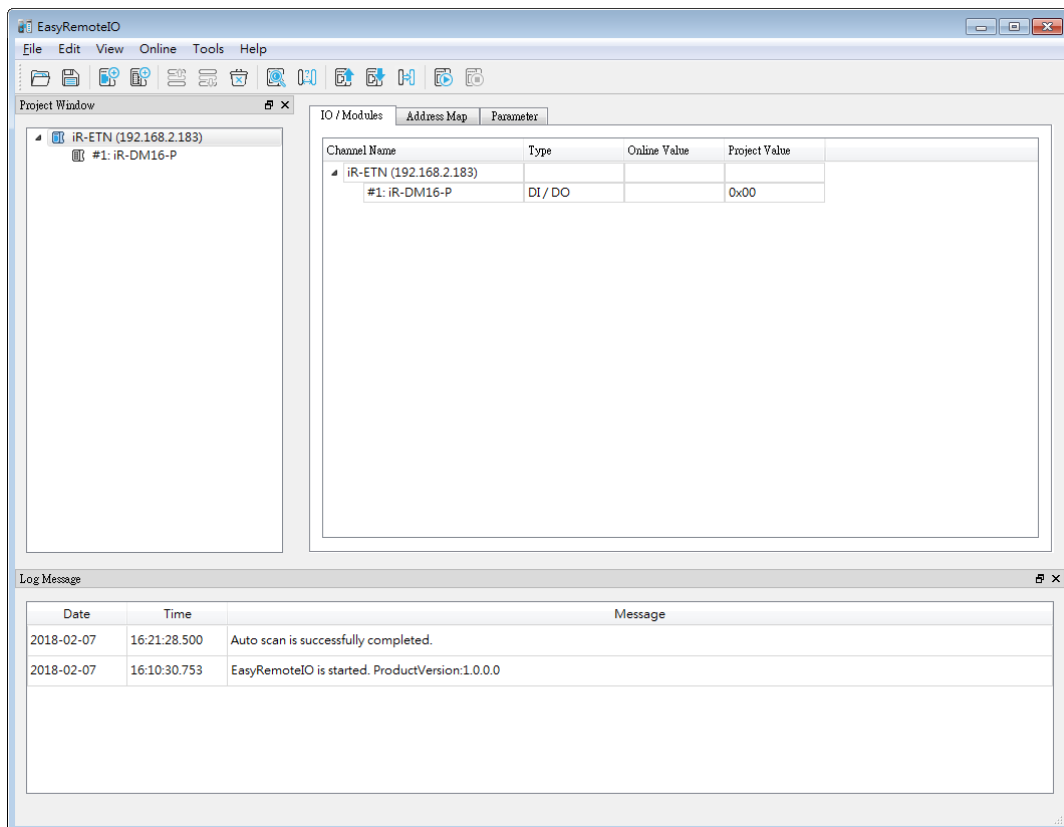
Select [Overwrite the project], and click [Scan]. The default IP of iR-ETN is 192.168.0.212. Please make sure the PC is in the same domain: 192.168.0.\*.\*.



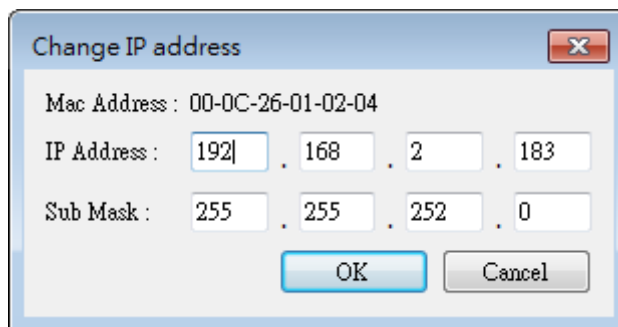
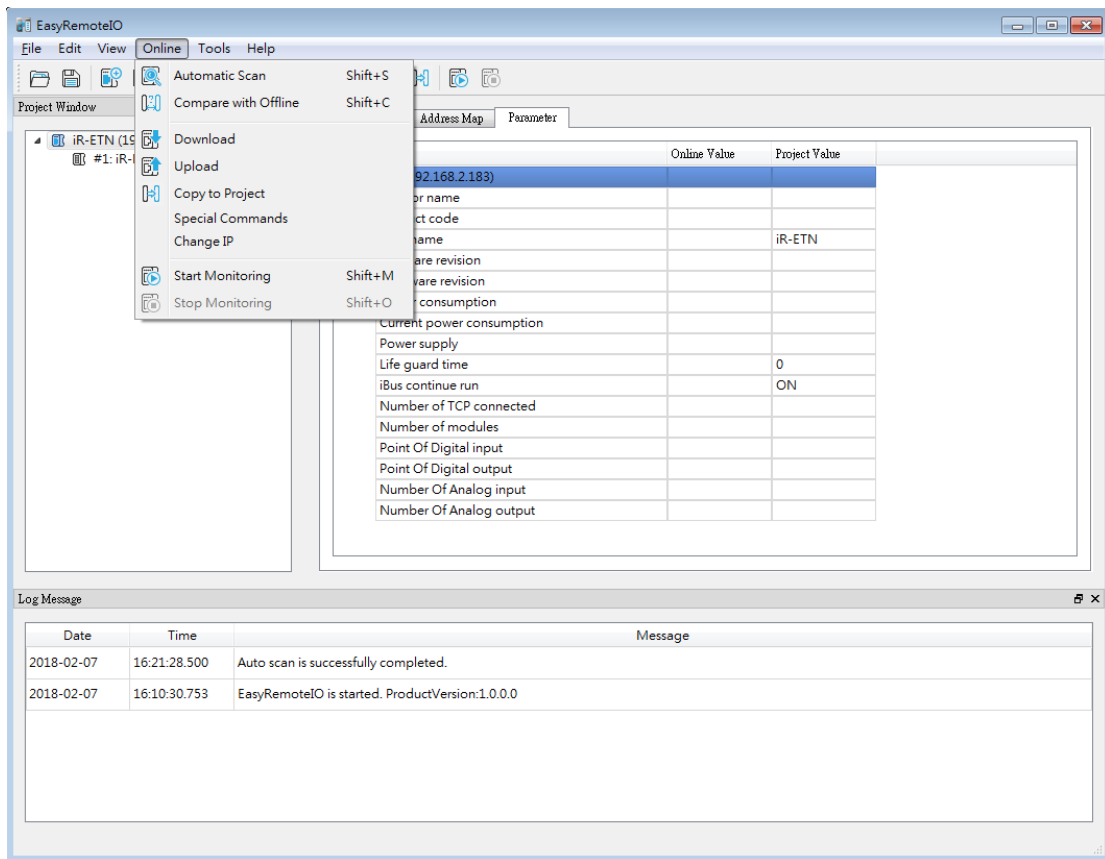
The iR-ETN can be found in Automatic Scan window. Select the iR-ETN you want to modify and click OK.



The iR-ETN and the module's information will be shown as below.

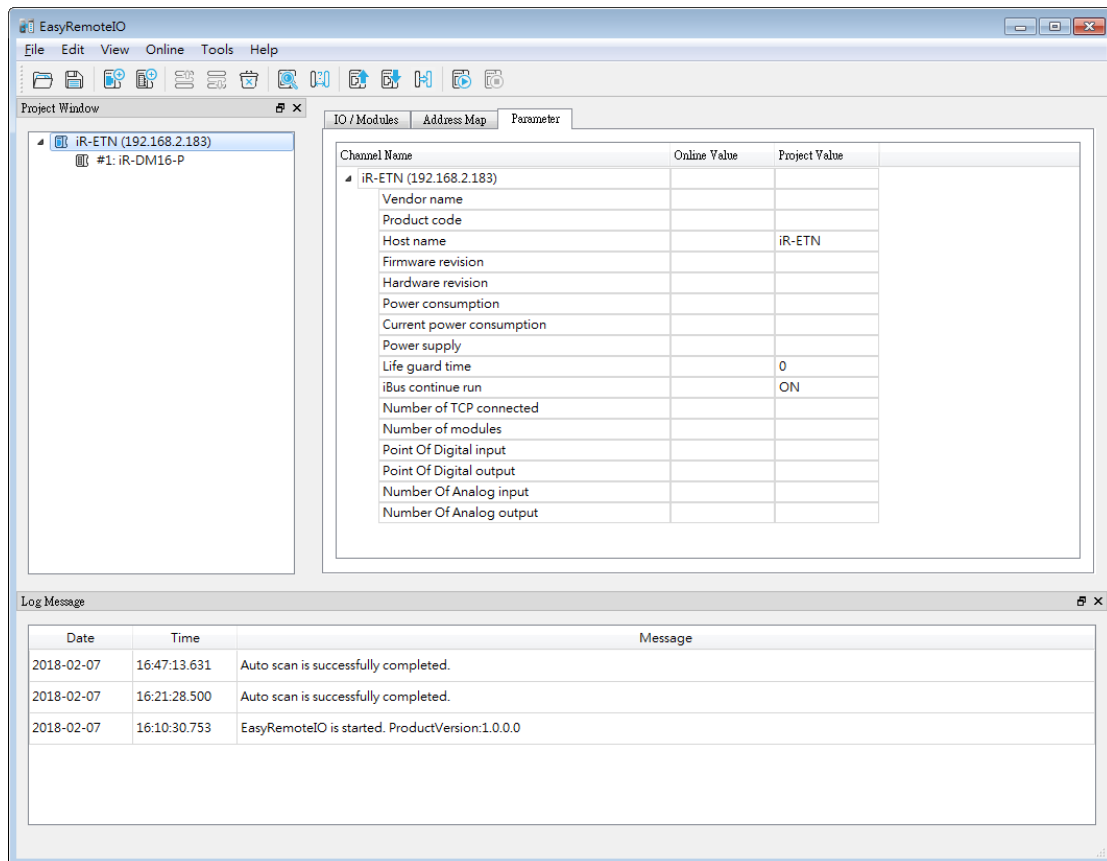


Select [Change IP] in [Online] to change the IP address of iR-ETN and then click OK.



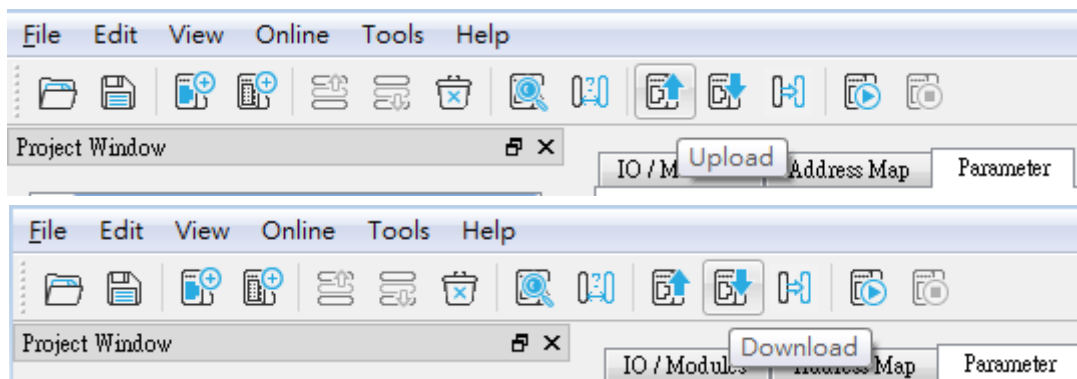
In the Project Window, select iR-ETN and then go to [Parameter] tab in the right column. Here you can change the related parameters of iR-ETN. The actual value of iR-ETN is in the [Online Value] column. The new value should be entered in the [Project Value] column.



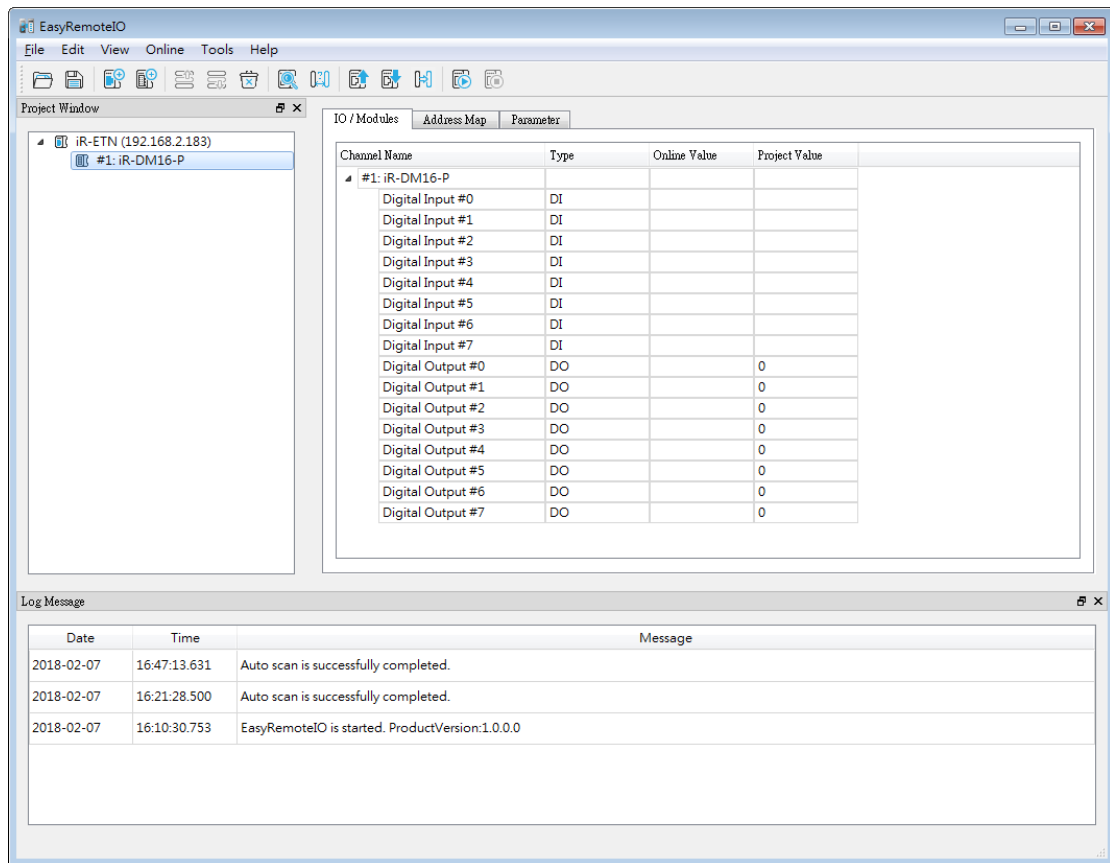


Click [Upload] to read the data from iR-ETN and show in EasyRemote I/O.

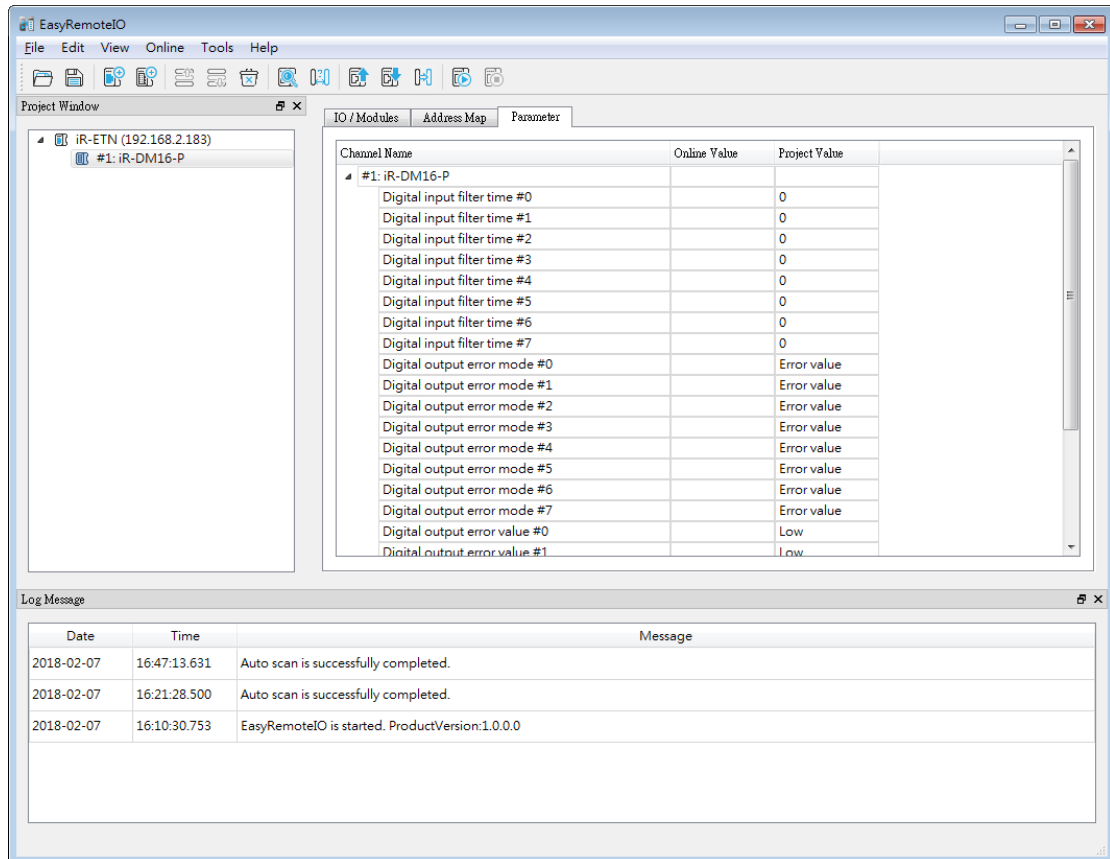
Click [Download] to write the data in EasyRemote I/O to iR-ETN.



Select iR-ETN’s module in Project Window. In the IO/Modules tab you can read/write inputs and outputs value. Click [Download] to write the data from EasyRemote I/O to iR-ETN.



The Parameter tab allows changing the parameters of the modules.



### 3. Settings

#### Edit

#### Add

Network Coupler: Add network coupler manually.

Module: Add module manually

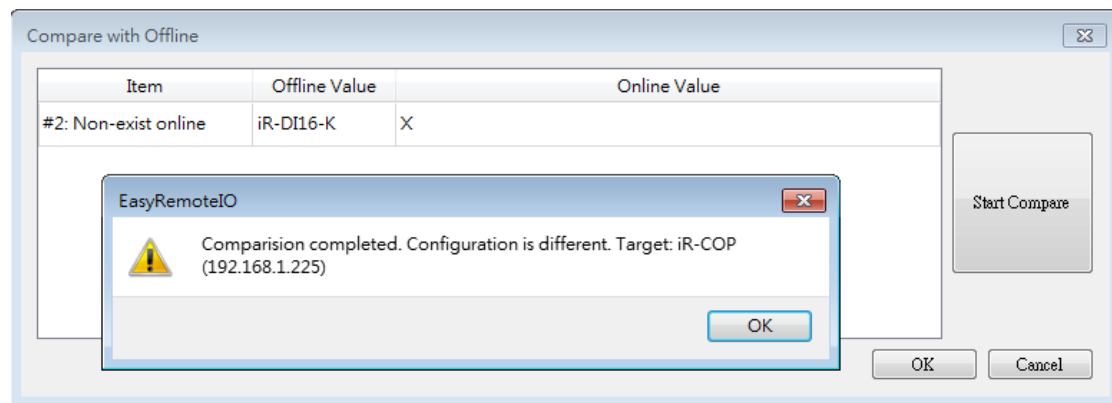
#### Online

##### Automatic Scan

Scan all the iR-ETN in the same domain.

##### Compare with Offline

Check whether the devices in EasyRemote I/O exist in the same domain.



##### Download

Write the value from EasyRemote I/O's Project Value column to the iR-ETN.

##### Upload

Read the value from iR-ETN and show in EasyRemote I/O's Online Value column.

##### Copy to project

Read the value from iR-ETN and show in EasyRemote I/O's Online Value and Project Value columns.



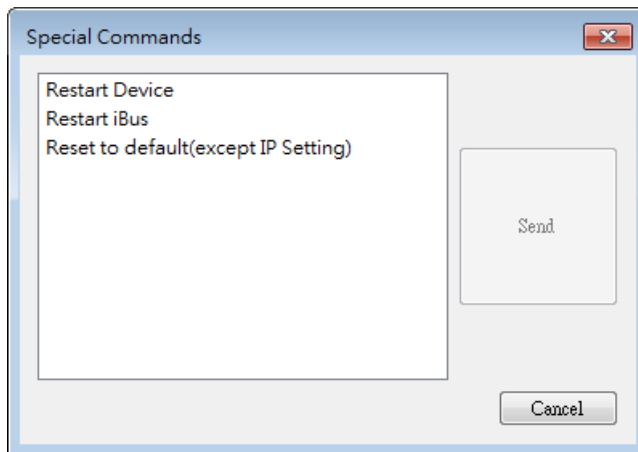
Channel Name	Type	Online Value	Project Value
<ul style="list-style-type: none"> <li> <ul style="list-style-type: none"> <li>Digital Input #0</li> <li>Digital Input #1</li> <li>Digital Input #2</li> <li>Digital Input #3</li> <li>Digital Input #4</li> <li>Digital Input #5</li> <li>Digital Input #6</li> <li>Digital Input #7</li> <li>Digital Output #0</li> <li>Digital Output #1</li> <li>Digital Output #2</li> <li>Digital Output #3</li> <li>Digital Output #4</li> <li>Digital Output #5</li> <li>Digital Output #6</li> <li>Digital Output #7</li> </ul> </li> </ul>			
	DI	0	
	DI	0	
	DI	0	
	DI	0	
	DI	0	
	DI	0	
	DI	0	
	DI	0	
	DO	0	0
	DO	0	0
	DO	0	0
	DO	0	0
	DO	1	1
	DO	0	0
	DO	0	0
	DO	0	0

### Special Commands

Restart Device: Restart iBus and module.

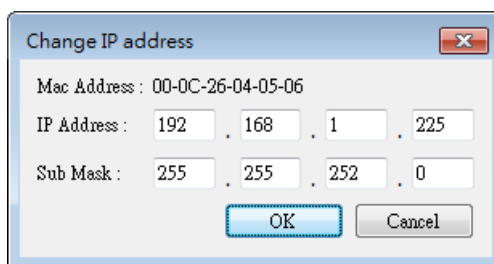
Restart iBus: Restart iBus only.

Reset to default (except IP setting): Reset all the parameters, except IP settings, to default.



### Change IP

Change the IP address of iR-ETN.



### Start Monitoring

Start monitoring iR-ETN. (Read only)

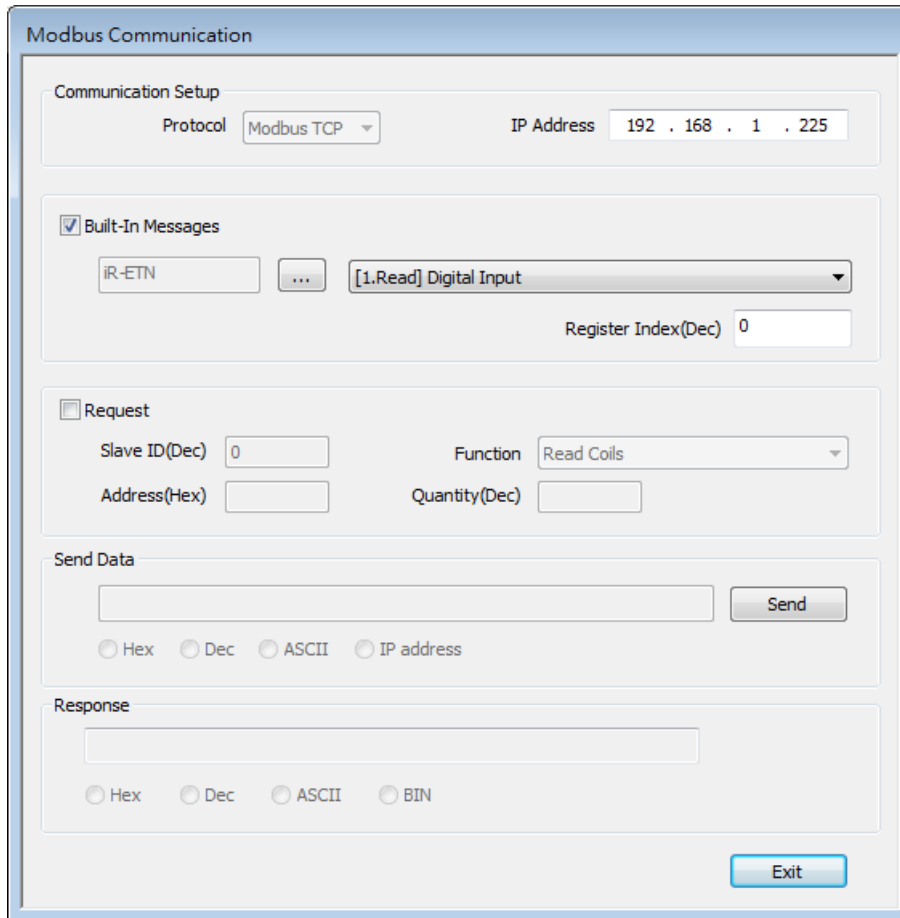
### Stop Monitoring

Stop monitoring iR-ETN.

## Tools

### Modbus

Allow users to run an online MODBUS TCP/IP client on the PC.



The screenshot shows the 'Modbus Communication' window with the following settings:

- Communication Setup:** Protocol is 'Modbus TCP', IP Address is '192 . 168 . 1 . 225'.
- Built-In Messages:** Checked. iR-ETN is selected in the dropdown, and the Register Index(Dec) is '0'.
- Request:** Unchecked. Slave ID(Dec) is '0', Function is 'Read Coils', Address(Hex) is empty, and Quantity(Dec) is empty.
- Send Data:** A text input field is empty, and the 'Send' button is visible. Radio buttons for Hex, Dec, ASCII, and IP address are present.
- Response:** A text input field is empty, and radio buttons for Hex, Dec, ASCII, and BIN are present.
- Exit:** A button is located at the bottom right of the window.