

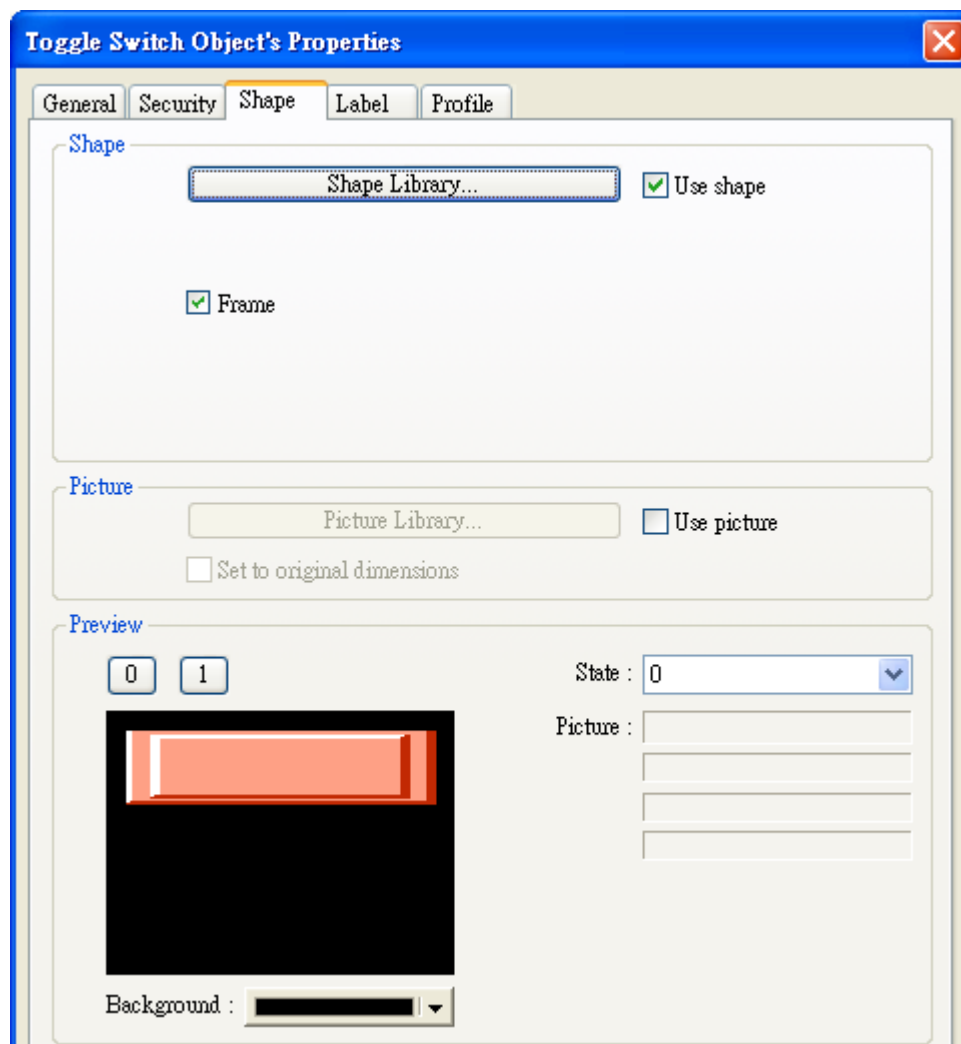
How to display square/circle on MT8070iH3/MT8070iE

For the particular size of MT8070iH3/MT6070iH3/MT8070iE/MT6070iE, before displaying square or circle, users have to calculate the width and height of the object.

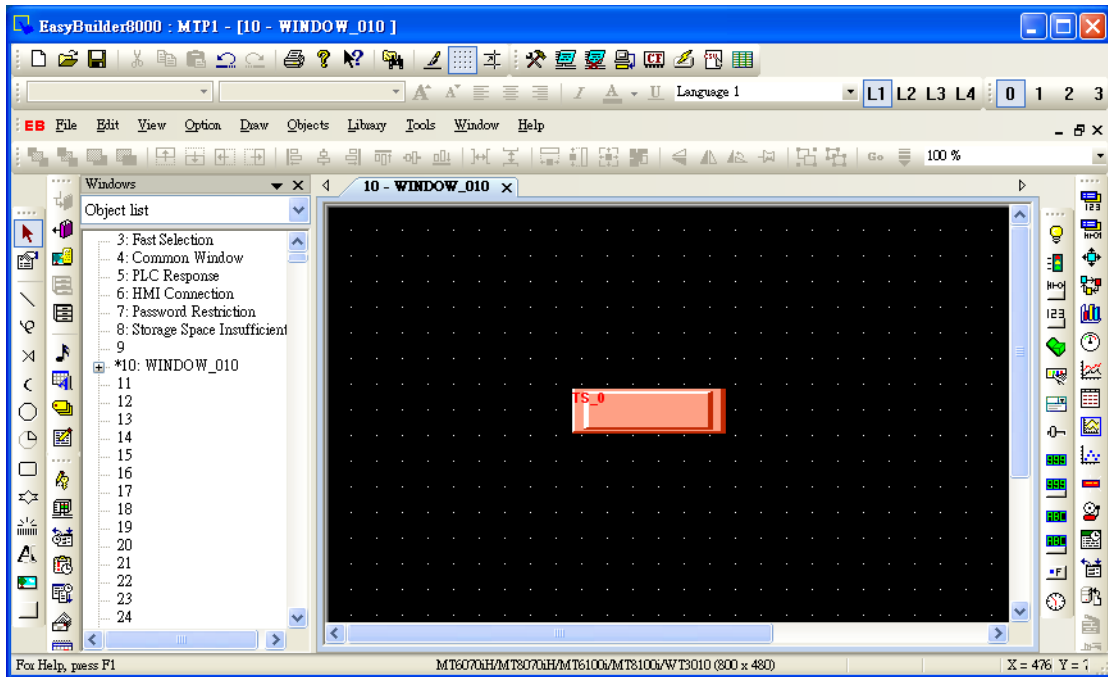
The formula for width and height is: WIDTH : HEIGHT = 1 : 1.076

For example: To make an 80x80 square.

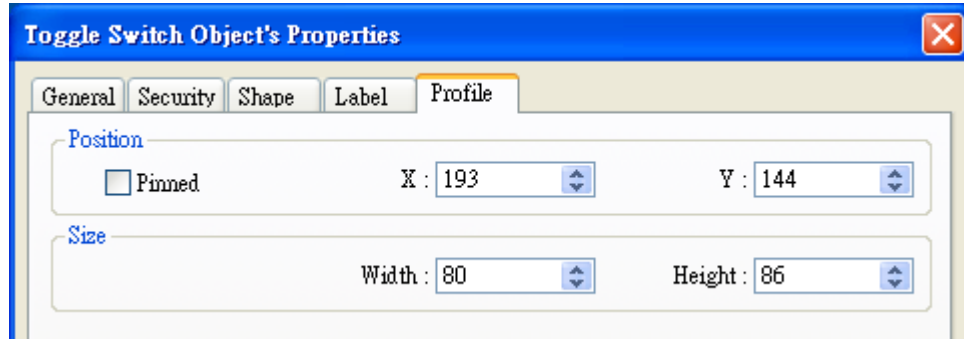
First, to create a toggle switch, select the picture and press ok.



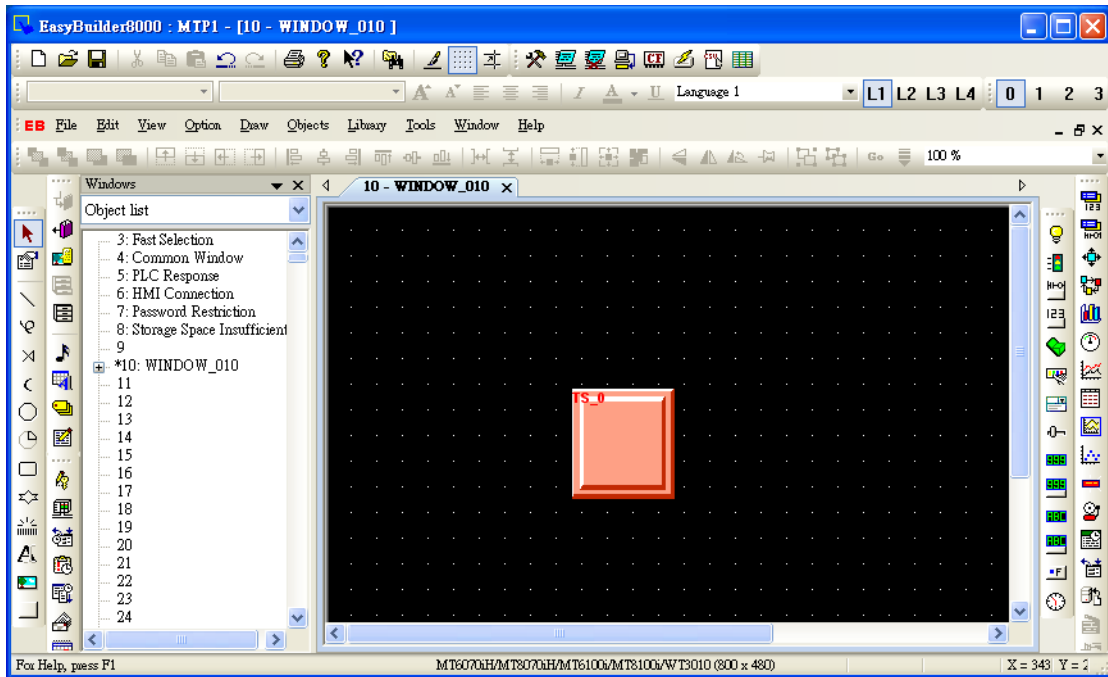
And then double click this object to call up Toggle Switch Object' s Properties / Profile tab.



The formula for width and height is: WIDTH : HEIGHT = 1 : 1.076, so fill in the width: 80 and height: 86. (Height: $80 \times 1.076 = 86$)



Press ok, the object looks like a rectangle at this moment. After downloading project to HMI, the object will become a square.



The formula of circle is the same as square setting as shown below.

On the upper side of screen, the width : height = 80:80, these 2 objects look like a rectangle and an ellipse.

On the lower side of screen, the width : height = 80:86, these 2 objects look like a square and a circle.

