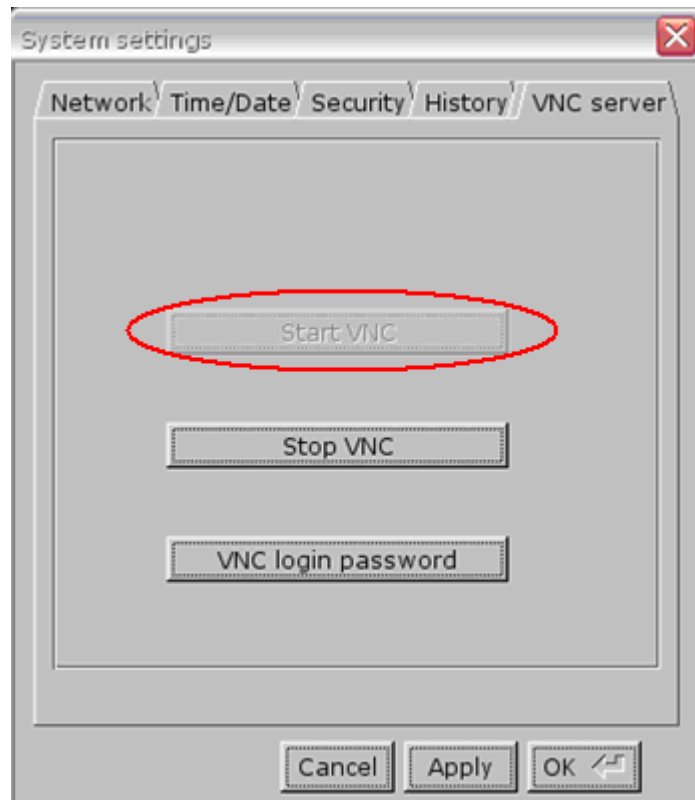


## How to use VNC server

1. Enable VNC server and set login password on HMI System Settings / VNC server tab.



2. Install Java for Internet Explorer or install VNC viewer.

Java web site: <http://java.com>

VNC viewer:

[ftp://ftp.weintek.com/MT8000/utility/vnc-4\\_1\\_2-x86\\_win32\\_viewer.zip](ftp://ftp.weintek.com/MT8000/utility/vnc-4_1_2-x86_win32_viewer.zip)

VNC viewer for Pocket PC:

<ftp://ftp.weintek.com/MT8000/utility/zoomVNC.CAB>

<http://zoomvnc.com/>

3. Execute IE, and enter IP address of HMI: <http://192.168.1.28> (example)



Or execute VNC viewer, and enter HMI IP address and password.



**Note:**

- (1) Only available for one user to login to VNC at the same time.
- (2) HMI will reject VNC connection if no operation done for one hour.
- (3) X and i series support VNC function only.