

Ethernet Pass-Through Communication

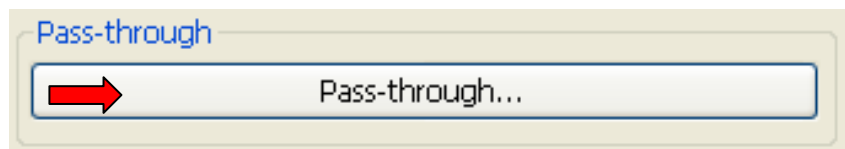
MT8000 provides Ethernet pass-through communication which allows PC to link to the PLC through the HMI. In this situation, the role of HMI is similar to a converter.



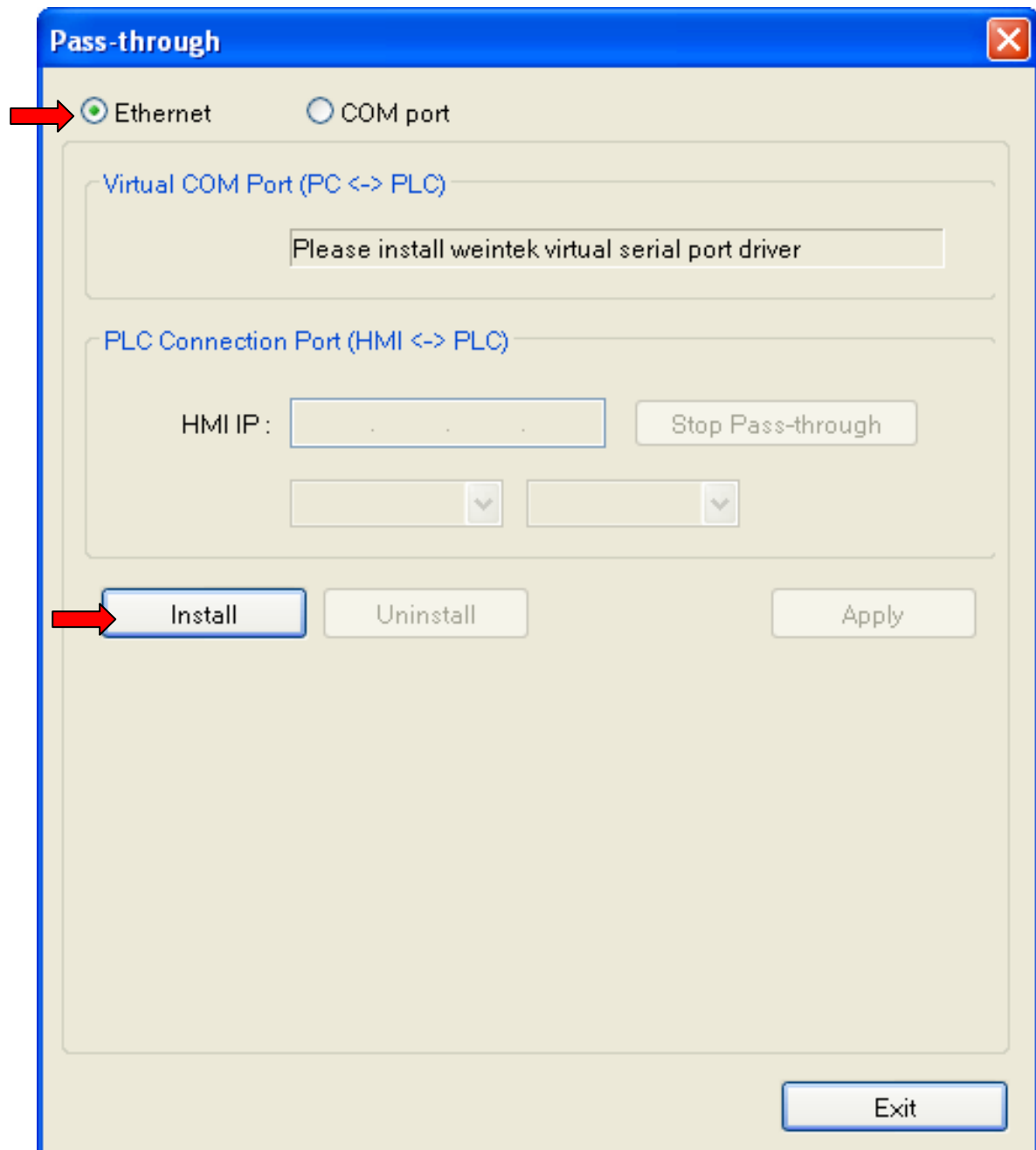
First, a virtual serial port must be created on PC. The application program on PC can communicate with PLC through this virtual serial port.

Instructions are as follows:

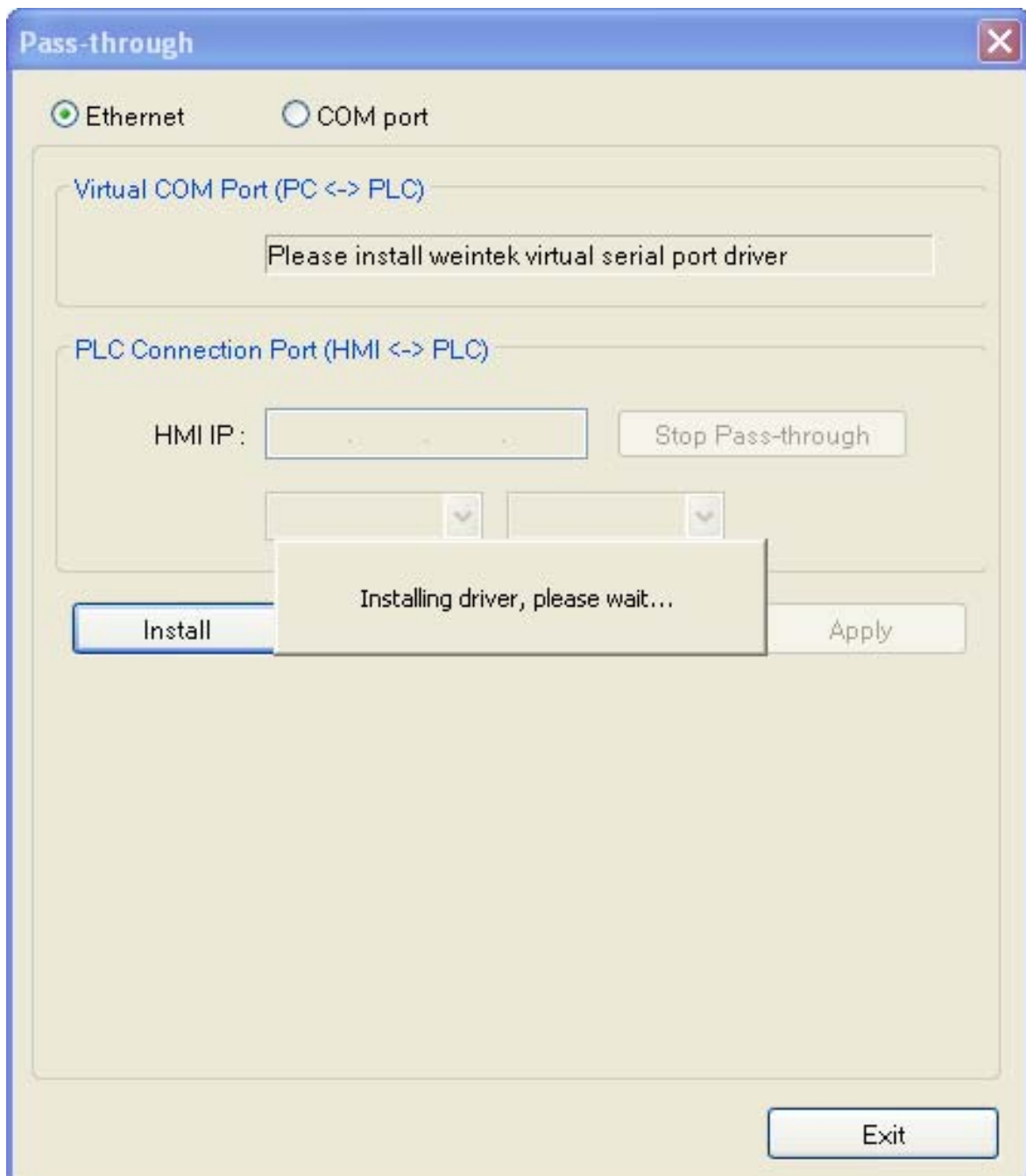
1. Open Project Manager and click the [Pass-through] button ;



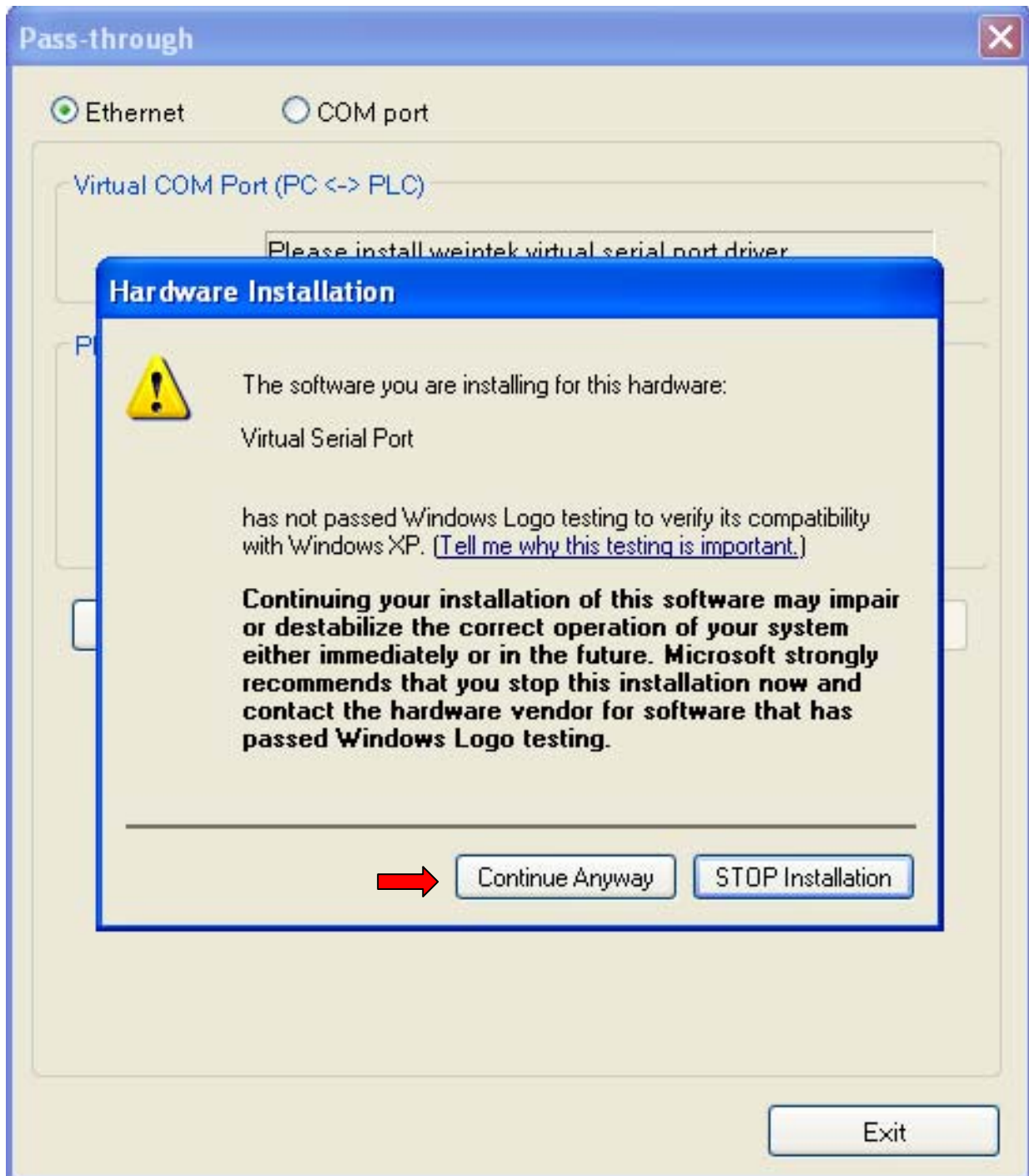
2. Check the [Ethernet] radio box, and click [Install] button to install the virtual serial port driver ;



3. Installing driver ...



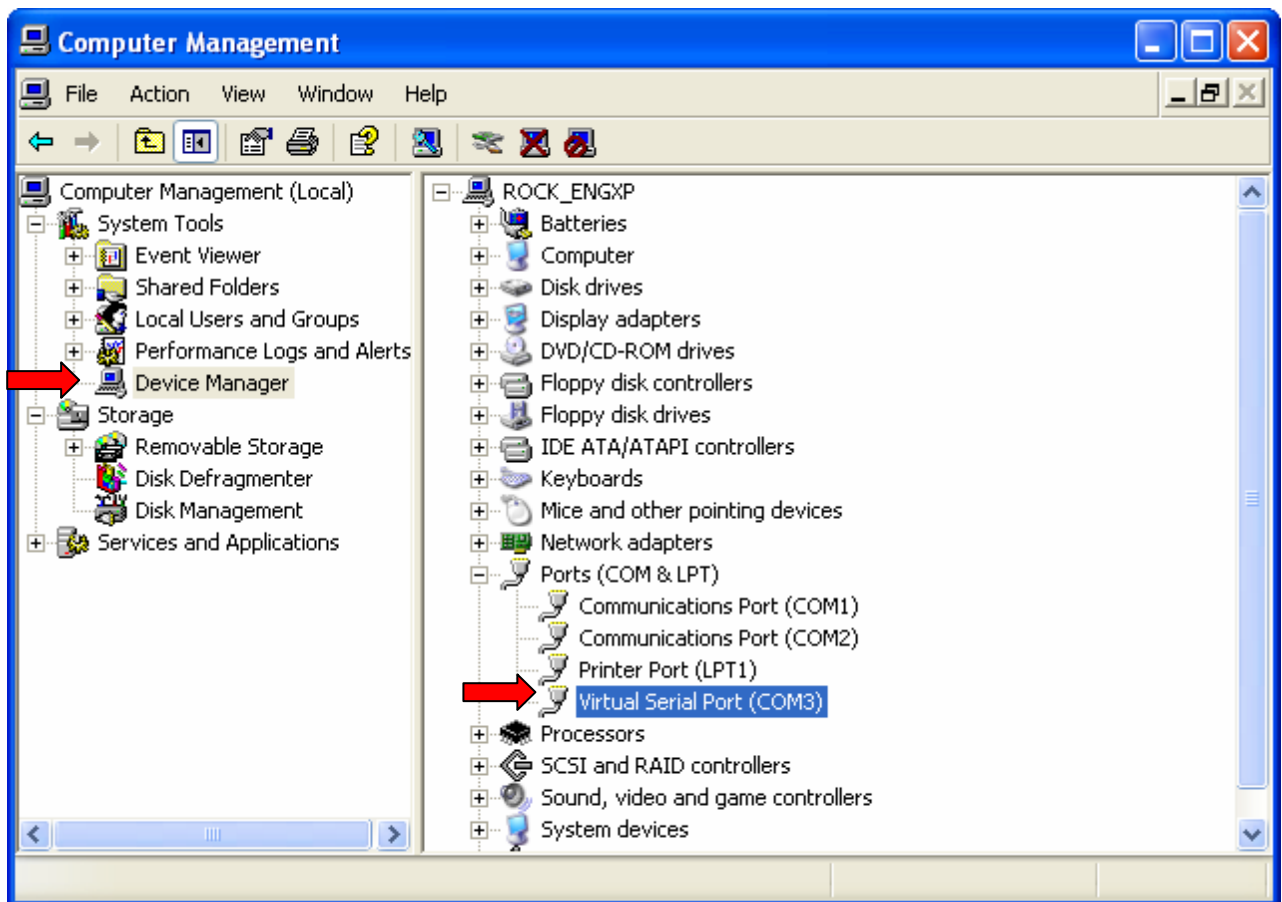
4. Click [Continue Anyway]



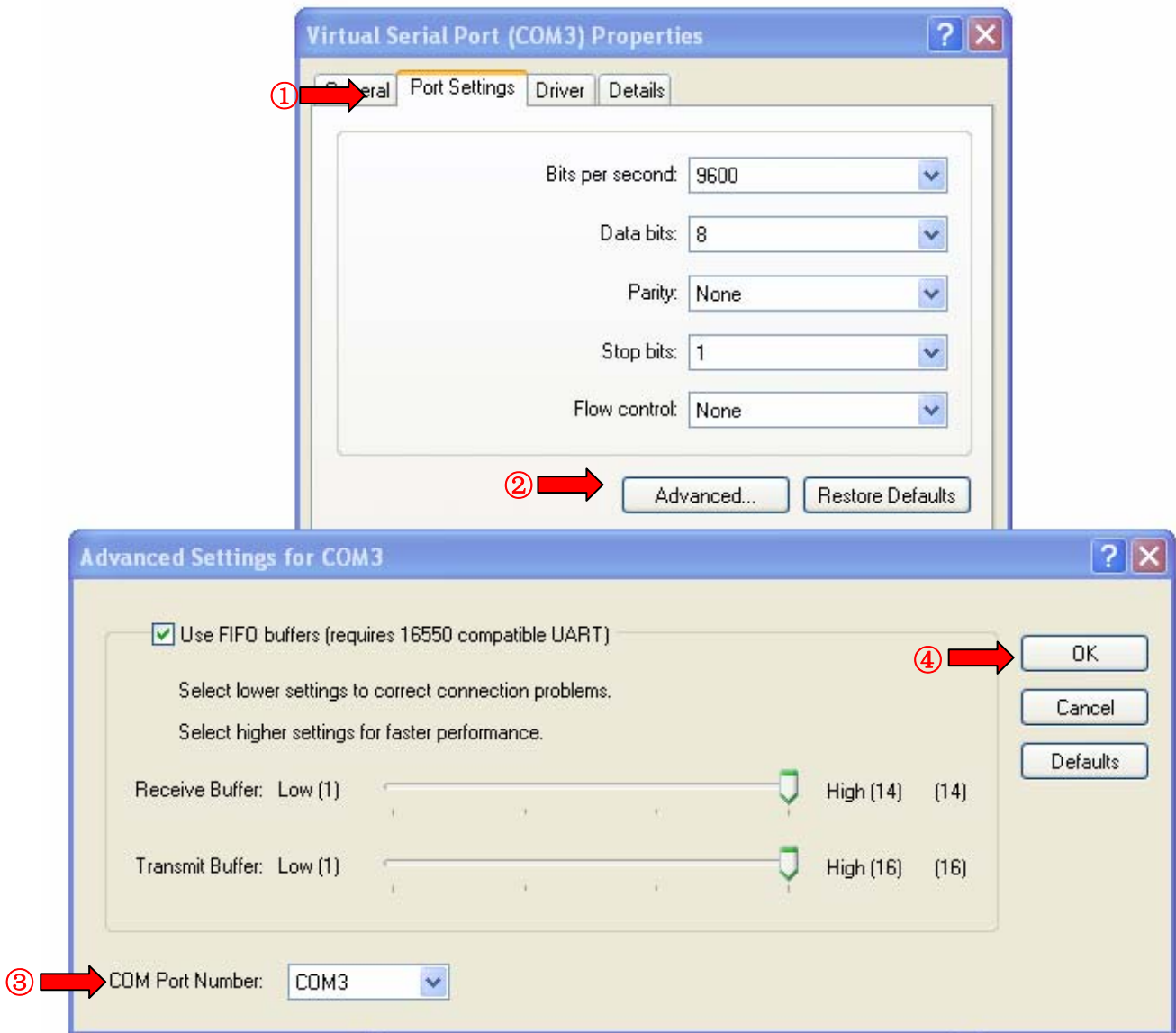
5. Virtual serial port installation completed. A new virtual COM port number is found ;



6. Check out the [Computer Management] to see if the virtual COM port is successfully installed.



7. Select the [Virtual Serial Port] and click right key . Select [Properties] to change COM port number ;



8. Take communication between Fatek PLC and MT8000 for example, if the MT8000 HMI IP address is 192.168.1.200, the PLC parameter settings are as follows :

Device Properties

Name : FATEK FB Series

HMI PLC

Location : Local

→ PLC type : FATEK FB Series
V.1.20, FATEK_FB.so

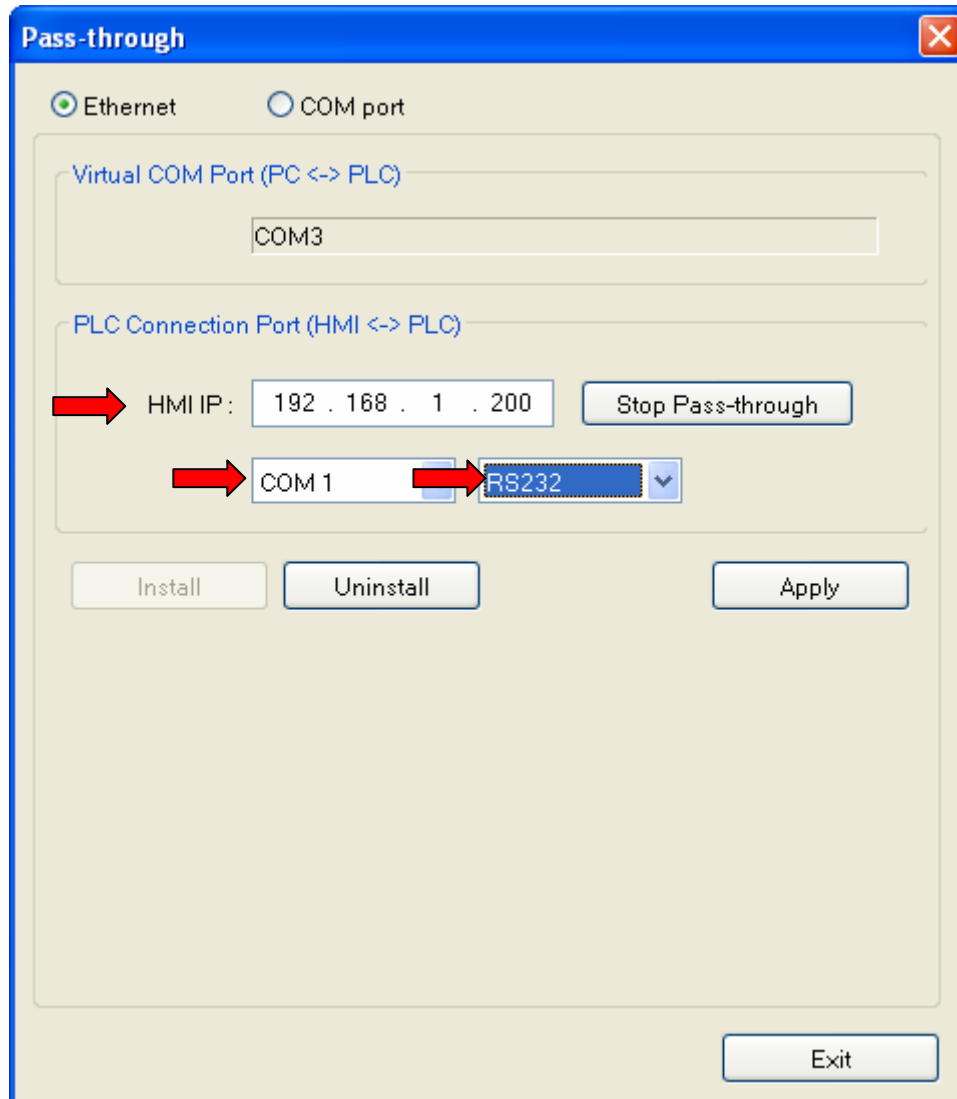
→ PLC I/F : RS-232 PLC default station no. : 1

→ COM : COM1 (9600,E,7,1)

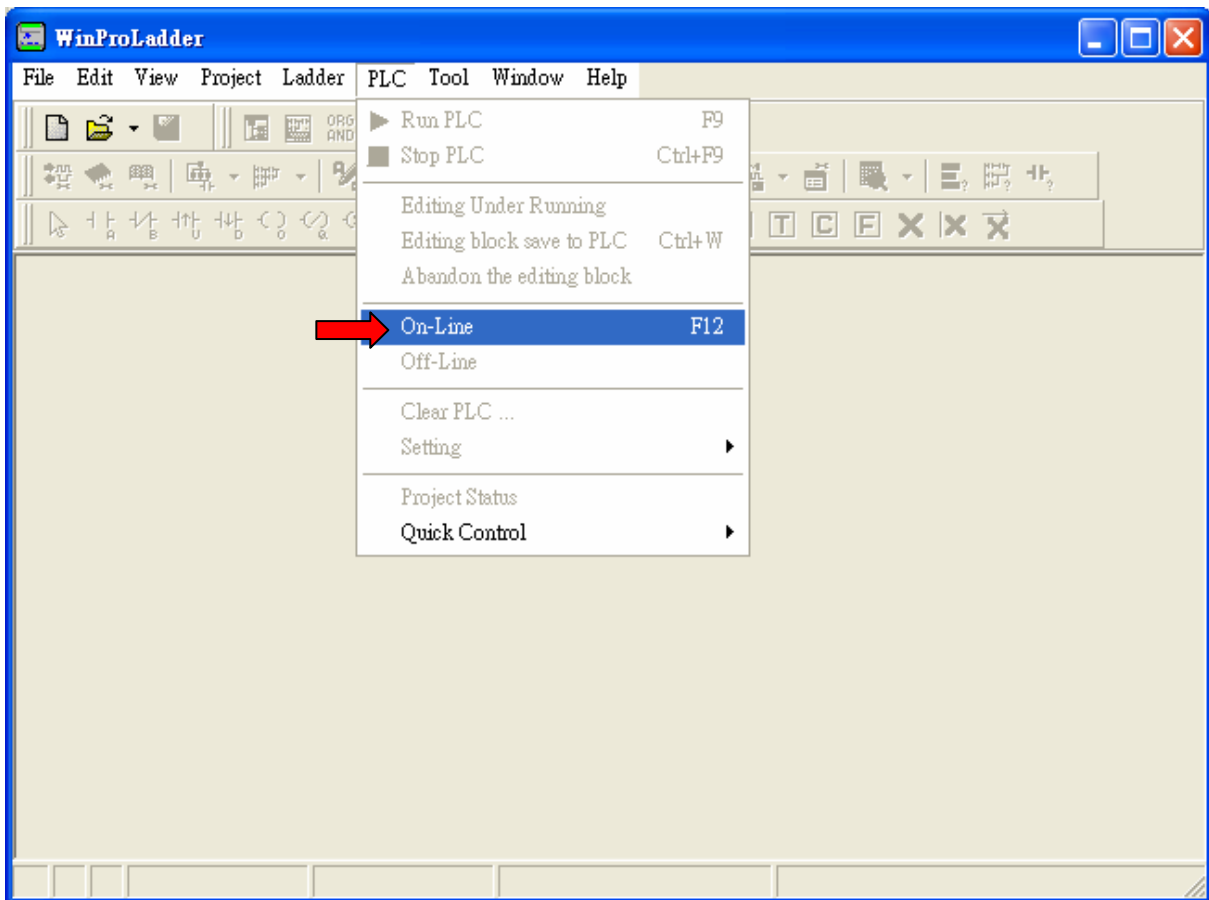
Use broadcast command

Interval of block pack (words) : 5
Max. read-command size (words) : 64
Max. write-command size (words) : 64

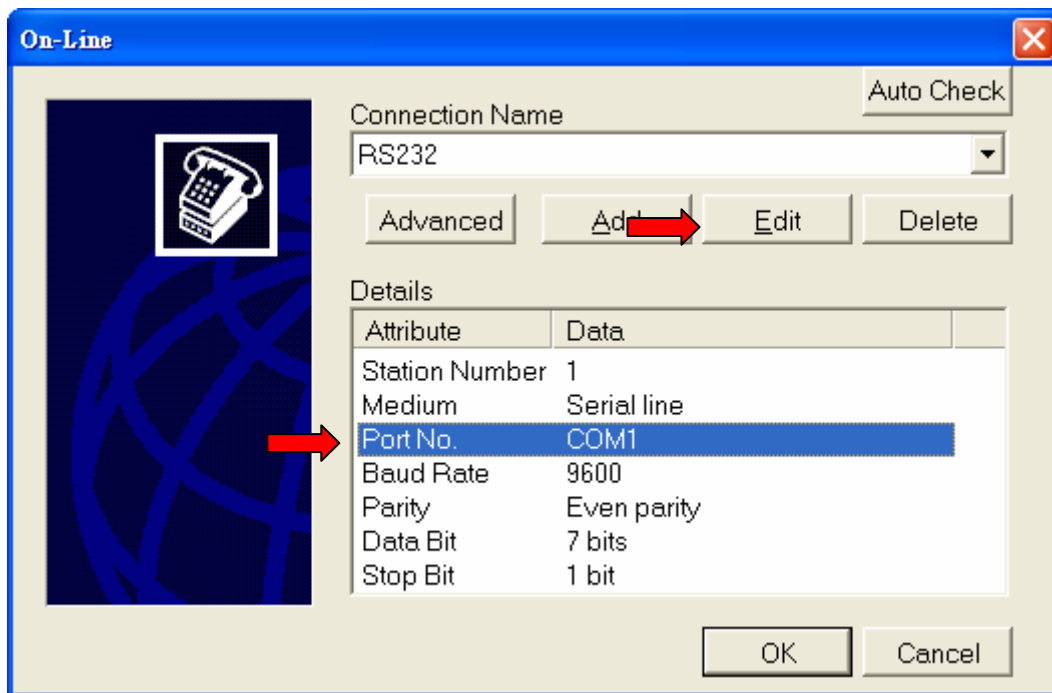
9. In the [Pass-through] window, setup the HMI IP address : 192.168.1.200 ; Set the COM port number to COM1, which is the communication port number between MT8000 and the PLC ; The COM port type is RS232, which is the communication port type between MT8000 and the PLC ; These settings are according to the window shown above ; Click [Apply] button.



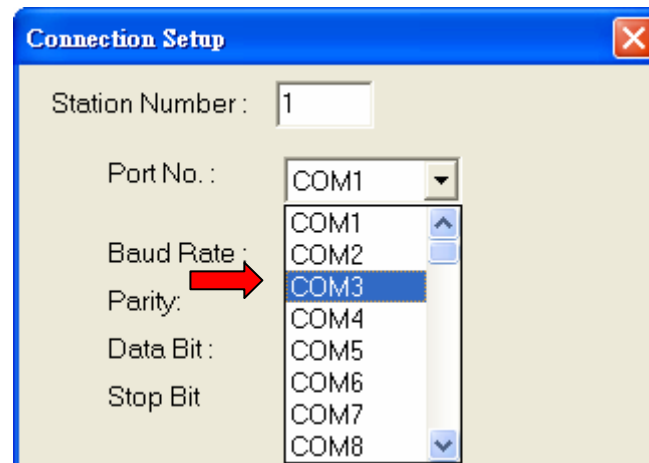
10. Open the Fatek PLC software : WinProLadder ; Select [On-Line] under PLC menu ;



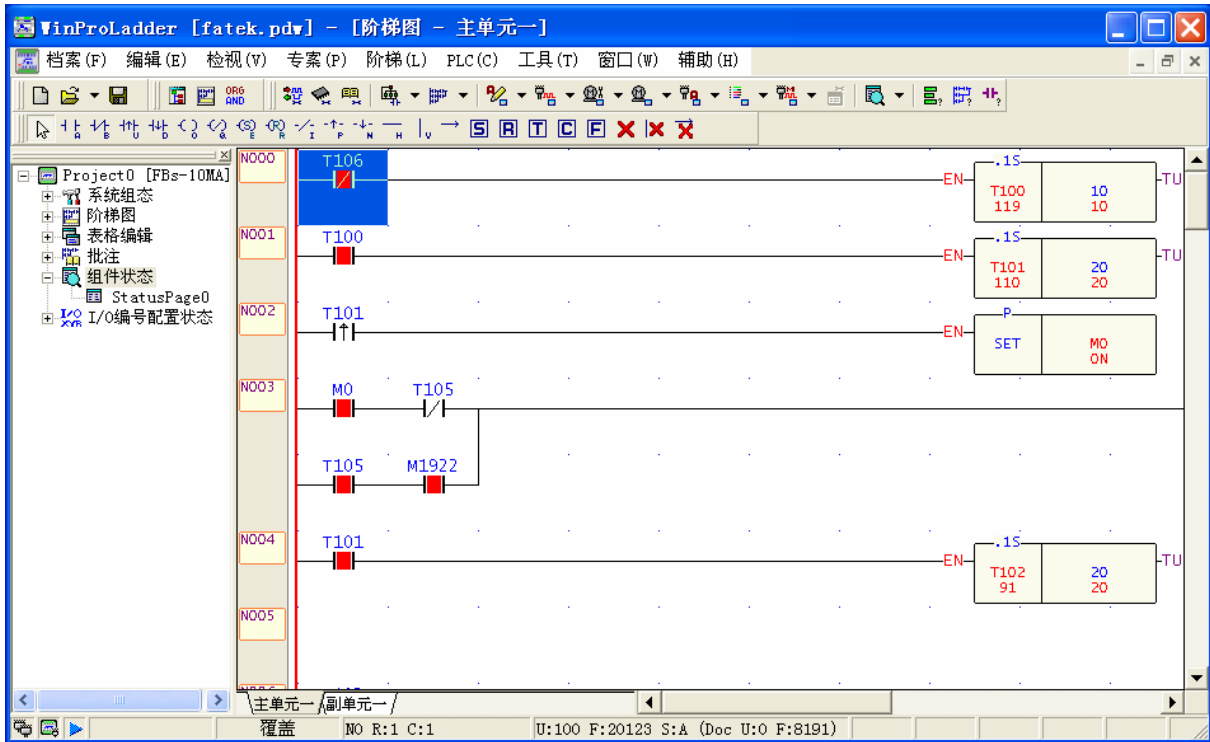
11. Set the COM port ;



12. Set the COM port number to COM3, which is the Virtual Serial Port number that you get in step 5 ;



13. Connection succeeded ;



14. PC—HMI—PLC connection example ;

