

Q.

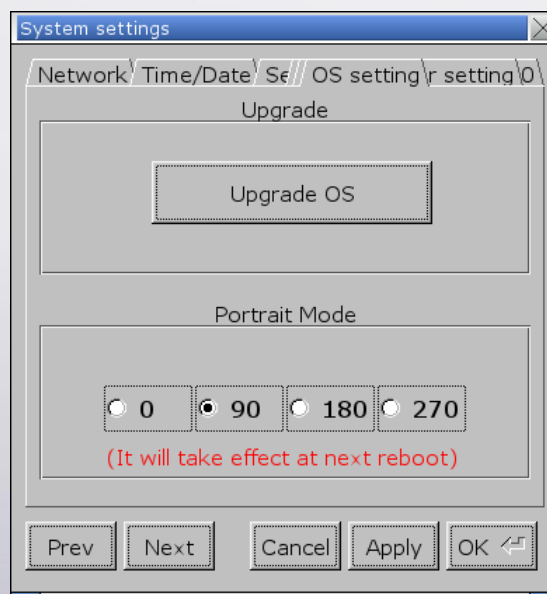
How to display project in portrait mode on HMI?

If the project file is edited in portrait mode, the following settings help to display project correctly on HMI.

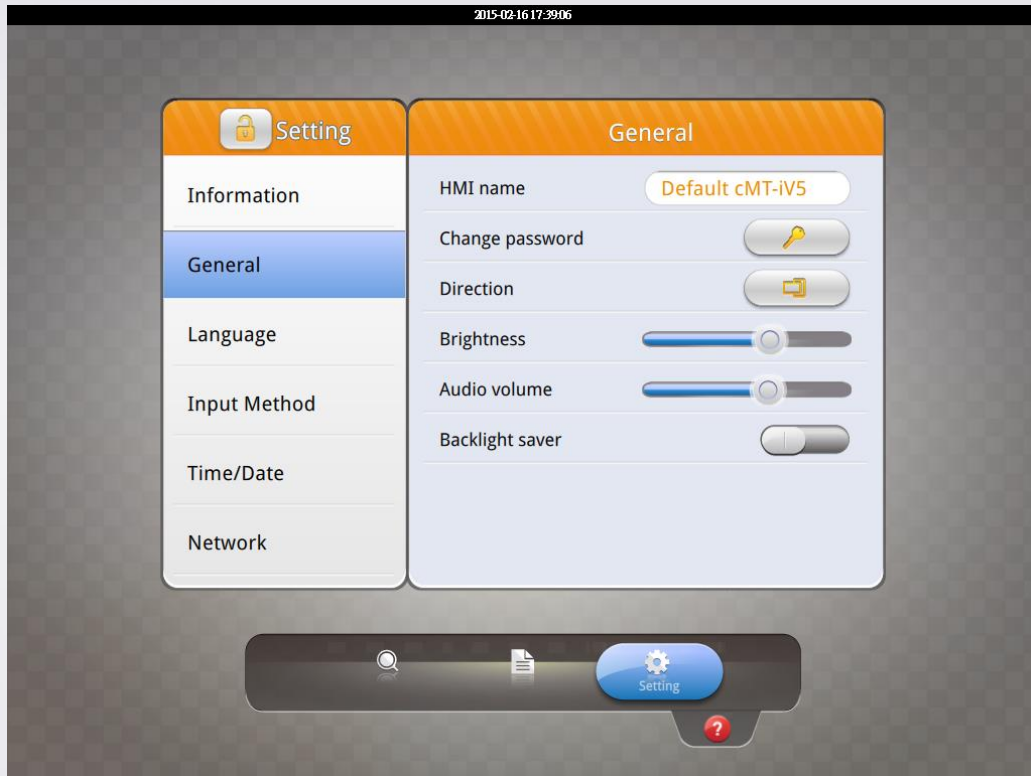
A.

Step 1. On HMI, open [System settings] » [OS setting], and select [90] or [270] in Portrait Mode group box.

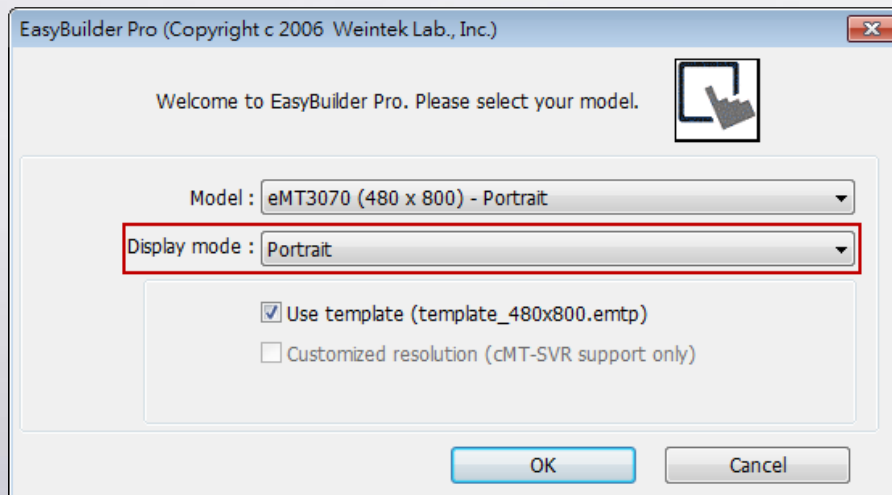
Applicable models: eMT, iE, XE, mTV, i Series



For cMT-iV5 model, open [Setting] » [General] » [Direction] to set portrait mode.



Step 2. Launch EasyBuilder, click [File] » [New] and select [Portrait] as display mode.



Please note that setting project in Portrait mode before editing the project is necessary. During project editing, the display mode cannot be changed.