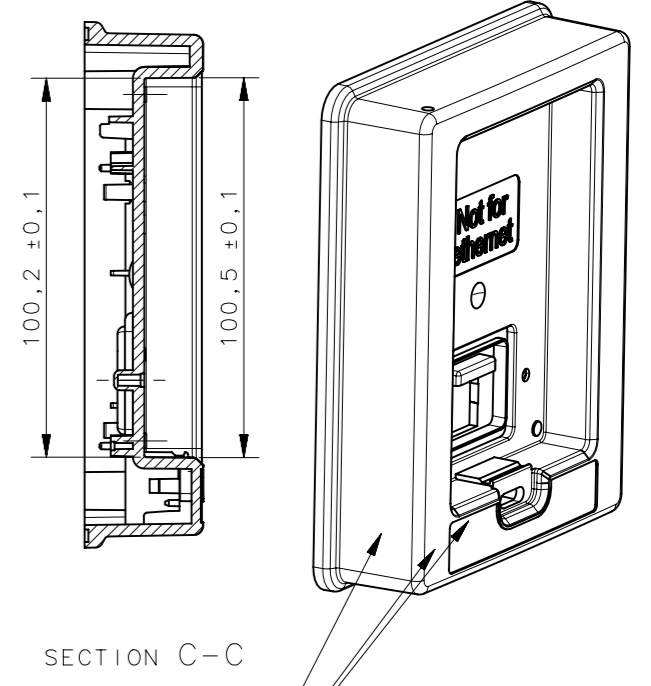
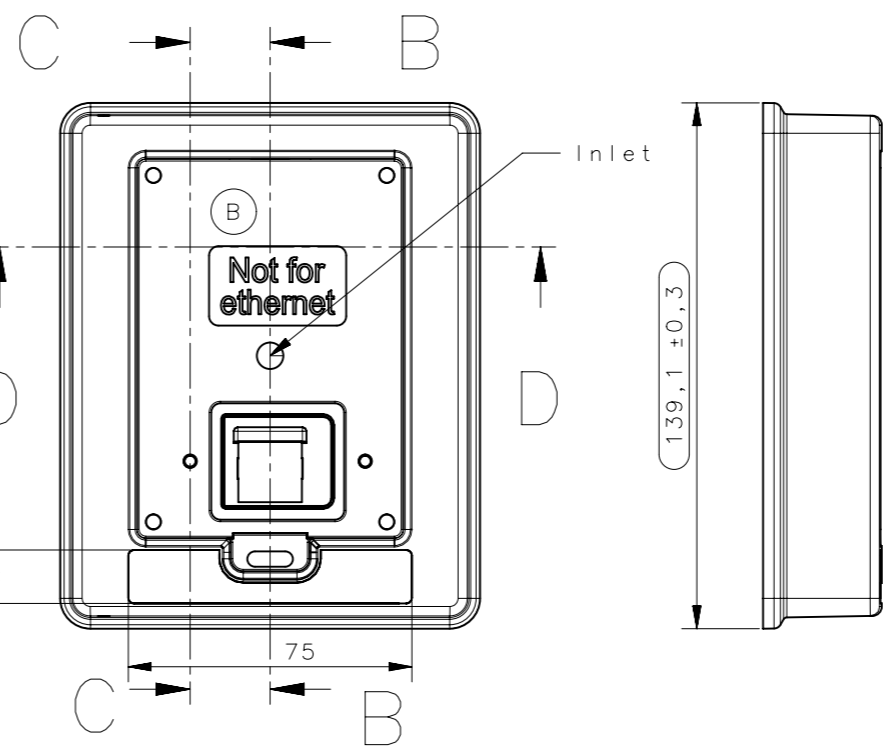
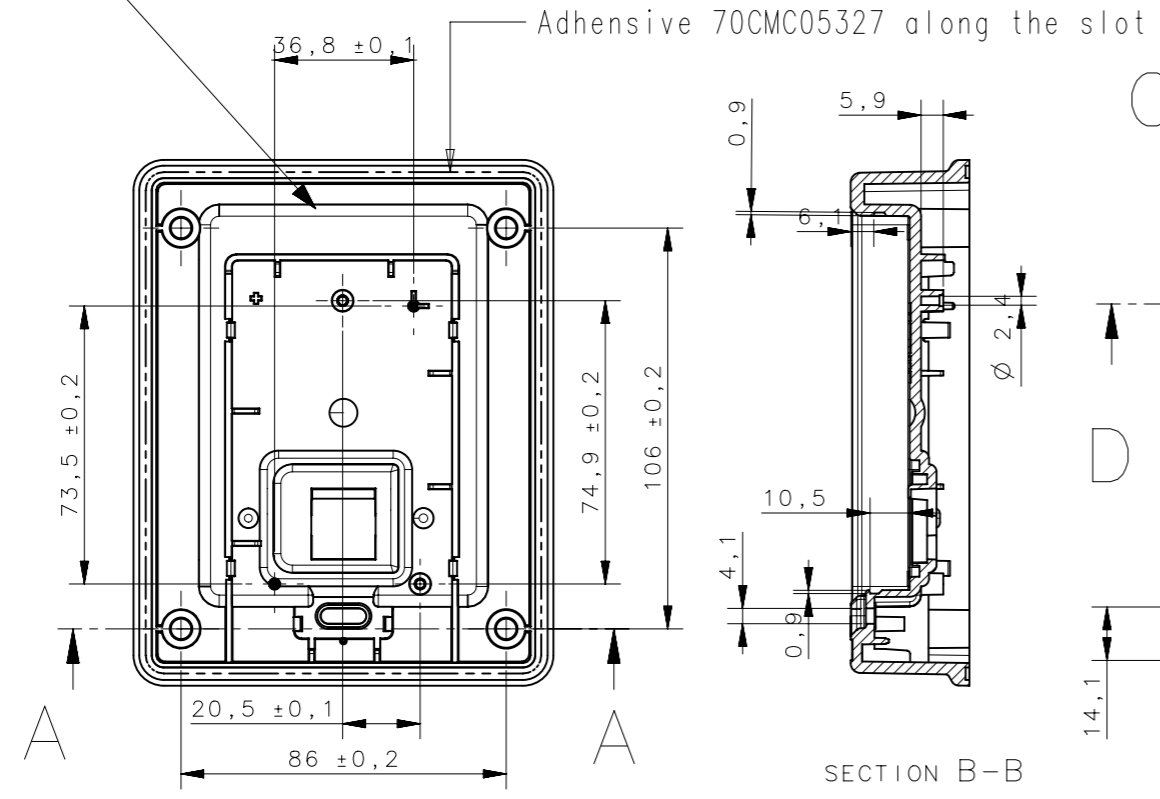
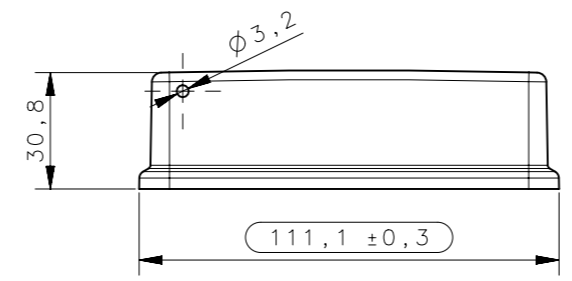


© Reproduction, use or disclosure to third party forbidden. All rights reserved.

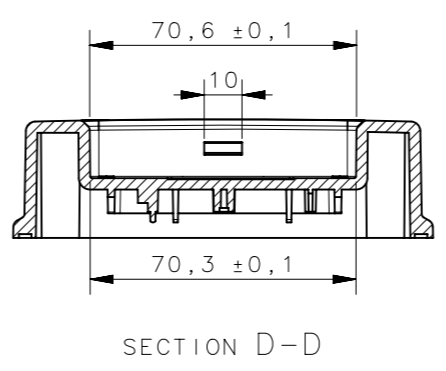
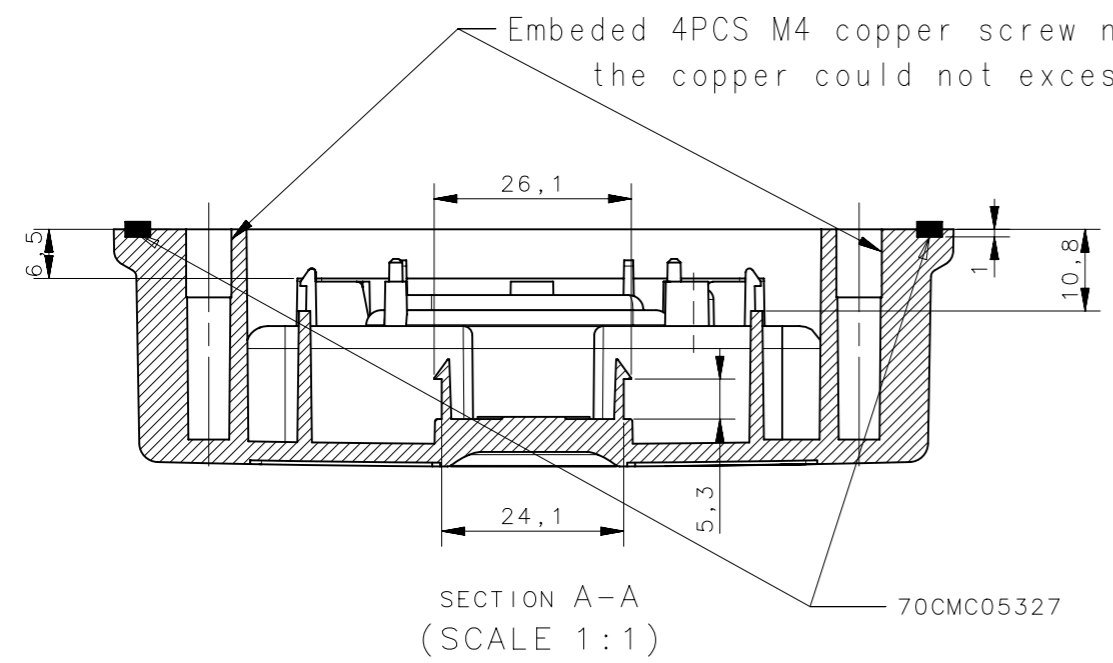
Revision	Change description	Date
B	Add marking information	DaFa 19.02.2014



Date clock and recycling/material Part no. revision insert to this surface



Embedded 4PCS M4 copper screw nuts, length 6-10mm the copper could not exceed the surface.



- Notes (Plastic parts):
- Add marks to mold at noted surface if possible:
Date code
Recycle symbol
Material
Part number
 - Symbol marked dimensions are critical control dimensions
 - un denoted dimensions refer to 3D
 - Draft angle 0.5° -2°

<Rev1>
<Rev2>
<Rev3>



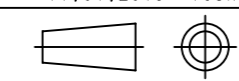
Material PC-ABS (LG Lupoy GN5001RF)
Finishing
Volume <108813 mm³>
Mass 114g

Product: HMI Door Panel Base
Name:
Add. Info 1:
Add. Info 2:

Designer 11.01.2013 DaFa
Approved 11.01.2013 ToSh

Gen.ToI. DIN16901
Scale 1:2

Sheet A3
Page 1/1



Doc. no. 70CMC05324

Revision B