

NEW

Network AC Servo Supports RTEX
Motion Controller GM1



Supports high-speed network for servo RTEX

Integrates motion control with PLC control



» High-speed response

Command cycle

0.5 ms

» Synchronous control

Servo Motor

16 axes

» ALL IN ONE

General-purpose I/O

High-speed counter

16 points each 2ch

» Ethernet

Ethernet/IP / Modbus-TCP

Equipped with 2 ports

One controller equipped with the functions needed for small devices

Positioning

Torque control

Speed control

Helps achieve high-speed and high accuracy for devices

High-speed network for servo RTEX

Existence axis **16** axes

Ethernet: 2 ports

EtherNet/IP* (1 port)
Modbus-TCP
General-purpose communication

RS-232C

Modbus-RTU
General-purpose communication

SD memory card



General-purpose I/O: 16 points each

Input: 16 points
NPN transistor output: 16 points
Expansion unit (64 points) × Up to 15 units

High-speed counter input: 2 channels

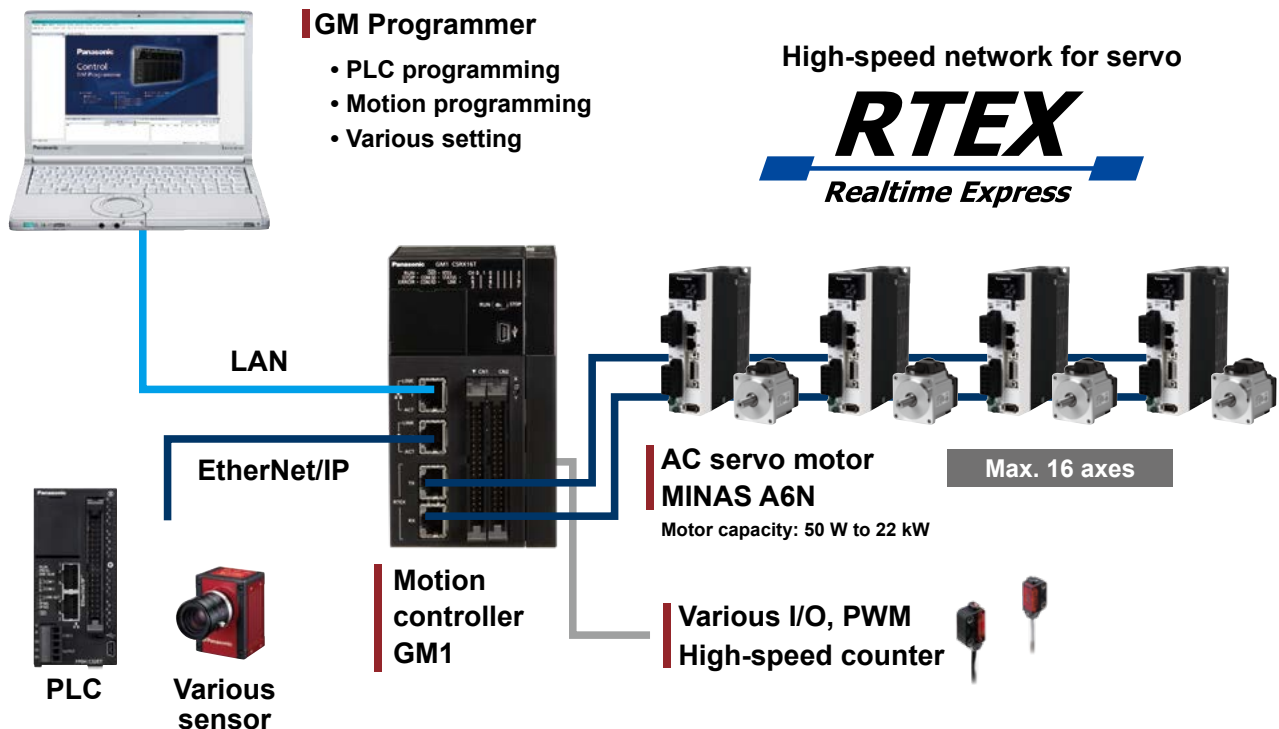
4-multiple, 16 MHz

PWM output: 4 channels

Up to 100 kHz

*EtherNet/IP is a trademark of ODVA, Inc.

System configuration

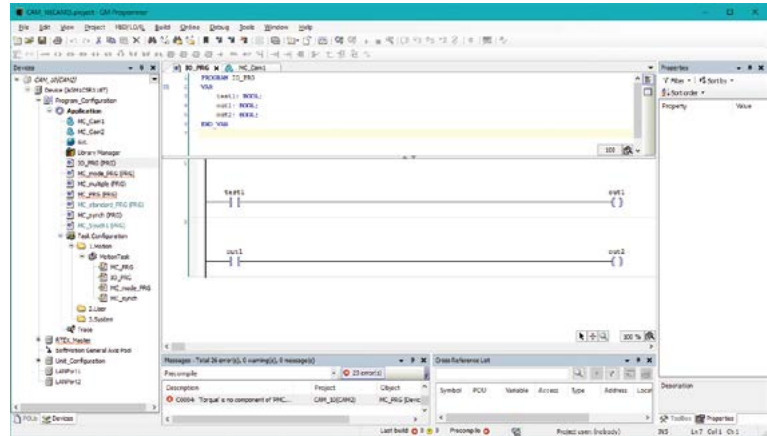


*Realtime Express and RTEX are registered trademarks of Panasonic Corporation.

Realtime Express is a high-speed and synchronous motion network exclusively developed by our company.

Configuration software

Complies with IEC 61131-3 standard
GM Programmer



6 programming languages

- LD (Ladder Diagram)
- FBD (Function Block Diagram)
- ST (Structured Text)
- SFC (Sequential Function Chart)
- CFC (Continuous Function Chart)
- IL (Instruction List)*

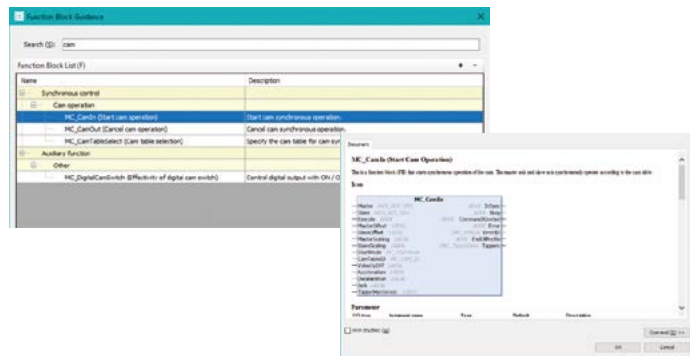
* Selectable by changing software settings.

Convenient debugging functions

Debugging is made easier by offline simulation of motion tracing, timing adjustment and other functions. This helps reduce system-design labor time.

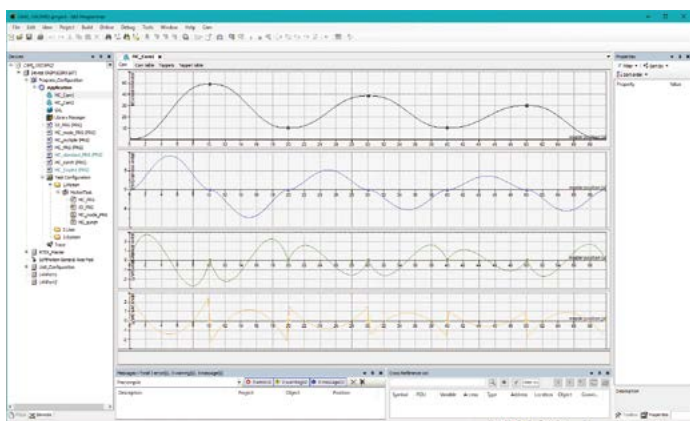
Function block guidance

The standard function block library dedicated to motion can be selected from the listing and retrieved. Set up can be done while checking the parameter details of each function block.



Cam editor

The graphical interface enables direct drag-and-drop editing of cam curves. Smooth shifting is achieved through intuitive operation.



Product types

Controller and Expansion units

Product name	Descriptions	Part No.
GM1 controller (sink)	RTEX 16 axes motion controller Transistor NPN type, Rated voltage 24 V DC 2 channels of high-speed counter, 16-point input, 16-point output (Up to 15 expansion units can be connected.)	AGM1CSRX16T
Digital 64-point input expansion unit	Digital input expansion unit 64-point input of 24 V DC	AGM1X64D2
Digital 64-point output (sink) expansion unit	Digital output expansion unit 64-point output of transistor NPN type	AGM1Y64T
Digital 64-point input/output (sink) expansion unit	Digital input/output expansion unit 32-point input of 24 V DC 32-point output of transistor NPN type	AGM1XY64D2T

*Connectors are not included with the controller or expansion unit. Please ensure you have the following connectors.
A power cable (Part No.: AFPG805) is included with the controller.

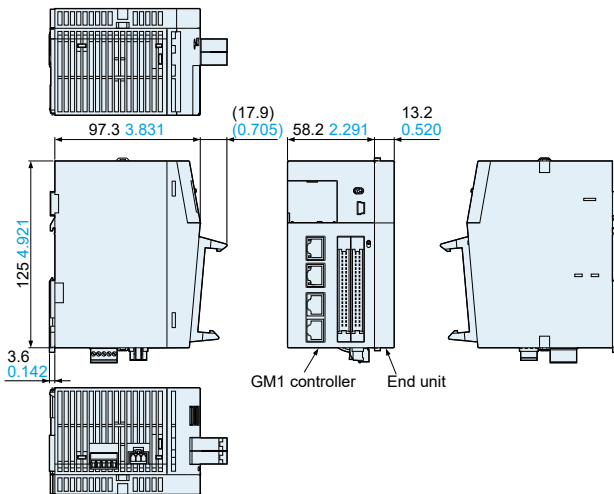
I/O connectors

Product name	Descriptions	Part No.
Discrete-wire connector set (40 pins)	For GM1 controller and expansion unit (including 2 pieces)	AFP2801
Flat cable connector set (40 pins)	Used when flat cables are used for bulk wiring. For GM1 controller and expansion unit (including 2 pieces)	AFP2802

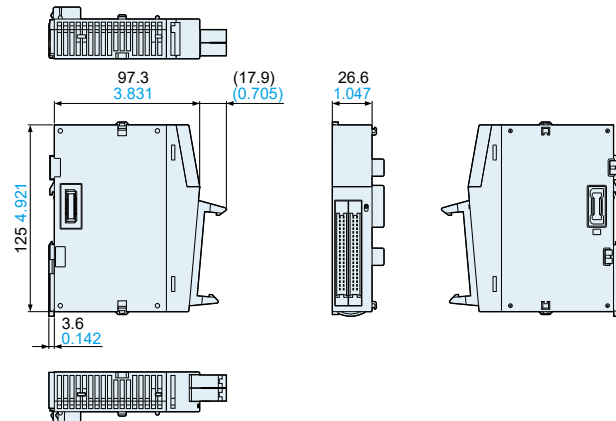
Dimensions (Unit: mm in)

The CAD data can be downloaded from our website.

GM1 controller



Digital I/O expansion unit



You can check detailed product specifications on our website.

Please contact

Panasonic Corporation

Industrial Device Business Division

■ 7-1-1, Morofuku, Daito-shi, Osaka 574-0044, Japan
industrial.panasonic.com/ac/e/

Panasonic®

©Panasonic Corporation 2021